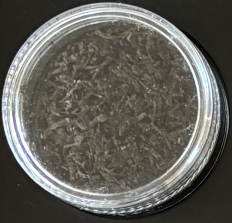




PLANTERS AFTERNOON

High-grown and handpicked, crafted for perfect balance and smoothness. Bright and refined, it's best enjoyed with a splash of milk and pairs beautifully with scones, clotted cream, and jam the essence of a true afternoon tea.



PLANTERS EARL GREY

The most aristocratic of teas is infused with the unmistakable aroma of bergamot. To balance the citrus, you need a bold tea. This Earl Grey is handpicked and infused with a drop of natural bergamot oil.



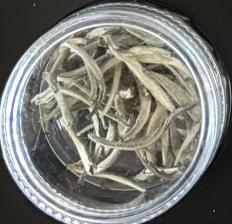
PLANTERS GREEN

Hand-picked from the misty peaks of Nuwara Eliya, each large leaf is carefully curled and pan-fired to perfection. Light and graceful, it unveils a delicate aroma and a subtle, mellow flavour that lingers on the palate. A refined, contemplative cup ideal for green tea connoisseurs or as an elegant after-dinner indulgence.



ROOIBOS

A naturally caffeine-free infusion, rich in antioxidants, zinc, and vitamin C. Smooth, slightly sweet, and warming, it's perfectly enjoyed with a drizzle of honey for a comforting, revitalising cup.



SILVER TIPS

Drinking Silver Tips is a quiet indulgence. The infusion is clear, with a subtle natural sheen. Grown in a precise microclimate and harvested at exact moments, the tender buds are selected from a distinct tea plant, individually hand-picked and gently handcrafted through a controlled oxidation process.



LEMONGRASS & GINGER

An aromatic infusion combining fresh lemongrass with gently warming ginger. Clean and refreshing, the cup is lifted by citrus notes and a soft, natural spice.



PEPPERMINT LEAVES

A refreshing infusion of whole peppermint leaves, naturally aromatic and cooling on the palate. Bright, crisp, and invigorating, it's the perfect after-dinner or afternoon pick-me-up.



CHAI CINNAMON

A bold, low-grown Ceylon tea infused with true Ceylon cinnamon, cloves, cardamom, ginger, and black pepper. Warm, spiced, and invigorating, it's the perfect cup to awaken the senses and complement sweet or savory treats.



CHAMOMILE FLOWERS

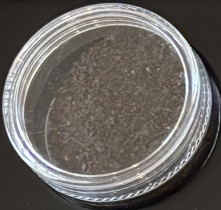
A naturally caffeine-free herbal infusion of whole chamomile blossoms, offering a gentle, honeyed aroma and soothing, floral flavour. Perfect for a calming moment, it's an elegant choice for afternoon or evening indulgence.



RADIANT ROSE

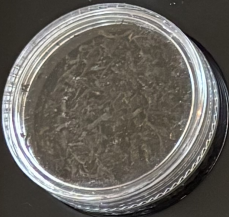
A hand-picked black tea blended with fragrant rose petals. The cup is smooth and subtly sweet, with a delicate floral aroma, perfect for a refined afternoon tea experience.





PLANTERS AFTERNOON

High-grown and handpicked, crafted for perfect balance and smoothness. Bright and refined, it's best enjoyed with a splash of milk and pairs beautifully with scones, clotted cream, and jam the essence of a true afternoon tea.



PLANTERS EARL GREY

The most aristocratic of teas is infused with the unmistakable aroma of bergamot. To balance the citrus, you need a bold tea. This Earl Grey is handpicked and infused with a drop of natural bergamot oil.



PLANTERS GREEN

Hand-picked from the misty peaks of Nuwara Eliya, each large leaf is carefully curled and pan-fired to perfection. Light and graceful, it unveils a delicate aroma and a subtle, mellow flavour that lingers on the palate. A refined, contemplative cup ideal for green tea connoisseurs or as an elegant after-dinner indulgence.



ROOIBOS

A naturally caffeine-free infusion, rich in antioxidants, zinc, and vitamin C. Smooth, slightly sweet, and warming, it's perfectly enjoyed with a drizzle of honey for a comforting, revitalising cup.



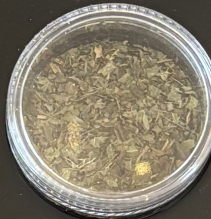
SILVER TIPS

Drinking Silver Tips is a quiet indulgence. The infusion is clear, with a subtle natural sheen. Grown in a precise microclimate and harvested at exact moments, the tender buds are selected from a distinct tea plant, individually hand-picked and gently handcrafted through a controlled oxidation process.



LEMONGRASS & GINGER

An aromatic infusion combining fresh lemongrass with gently warming ginger. Clean and refreshing, the cup is lifted by citrus notes and a soft, natural spice.



PEPPERMINT LEAVES

A refreshing infusion of whole peppermint leaves, naturally aromatic and cooling on the palate. Bright, crisp, and invigorating, it's the perfect after-dinner or afternoon pick-me-up.



CHAI CINNAMON

A bold, low-grown Ceylon tea infused with true Ceylon cinnamon, cloves, cardamom, ginger, and black pepper. Warm, spiced, and invigorating, it's the perfect cup to awaken the senses and complement sweet or savory treats.



CHAMOMILE FLOWERS

A naturally caffeine-free herbal infusion of whole chamomile blossoms, offering a gentle, honeyed aroma and soothing, floral flavour. Perfect for a calming moment, it's an elegant choice for afternoon or evening indulgence.



RADIANT ROSE

A hand-picked black tea blended with fragrant rose petals. The cup is smooth and subtly sweet, with a delicate floral aroma, perfect for a refined afternoon tea experience.

